

N. H. College Bramhapuri, Dist: Chandrapur

Center for Higher Learning and Research (CHLR)

Post Graduate Department of Geography

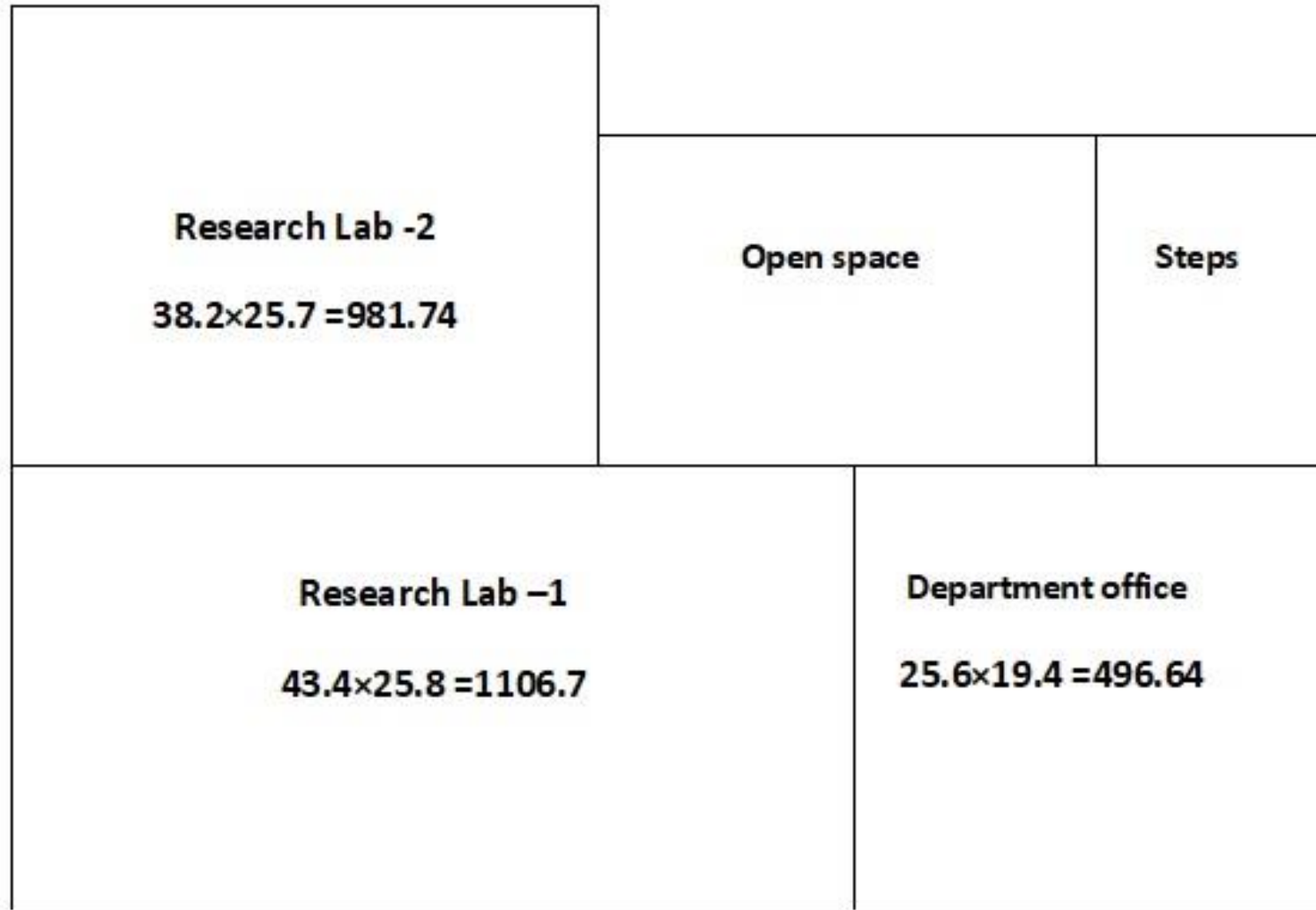
(Gondwana University, Gadchiroli)

INFRASTRUCTURE & FACILITY

LABORATORY AREA

Sr. No.	Particular	Number of Room	Area (Sq.feet)
1	Office Room	1	25.6×19.4 = 496.64
2	Geography Lab -1	1	43.4×25.8 = 1106.7
3	Geography Lab -2	1	38.2×25.7 = 981.74

DEPARTMENT LAYOUT



LIST OF AVAILABLE INSTRUMENTS

Sr. N.	List of Furniture & Others	Quantity	Sr. N.	Name of the Instruments	Quantity
1	Cooler	1	17	Computers with LAN	4
2	CCTV Set(camera)	3	18	Laptops	1
3	Wooden Almira	2	19	Digital Board	1
4	Book Case	6	20	Projection Screen	1
5	Office Chair	4	21	Printers BW	1
6	Computer Table	1	22	Colour Printers	1
7	Water RO	1	23	Scanners	1
8	Executive Chair	2	24	Software	1
9	Table	3	25	UPS	1
10	Metal Almira	3	26	Computerized Telescope	1
11	Fiber Chair	7	27	GPS	1
12	Fan	15	28	Automatic Weather Station	1
13	Tube Light	4	29	Video Camera	1
14	Watch(wall)	2	30	Projector	1
15	Computer Chair	2	31	Ahuja Audio System	1
16	Notice Board	2	32	Paxiscope-XL	1

DEPARTMENTAL LIBRARY

S.N.	PARTICULARS	QUANTITY
1	Library Books	113
2	Journal	31
3	Ph.D. Thesis	06
4	PG Project Report	313
5	Socio Economic Survey Report	15