

Nevjabai Hitkarini College, Bramhapuri

Specific facilities provided for women in terms of

1. Safety & Security

- Institution promotes the girls students equally to participate in curricular and co-curricular activities like college day event, NSS, NCC, seminar and quiz competition and in tour & excursion.
- Institution always kept security of girls students in top priority. Installation of 99 CCTV cameras in college campus including class rooms, office, main entrance, hostel etc. Safety wall all around the college campus with 24x7 security guard present on the main entrance.

2. Counselling

Staff members are constantly engaged in students counselling to solve their personal and curriculum related problems through mentor mentee and students guardianship scheme.

3. Common Room

- First aid box and sanitary napkin vending machine made available in girls common room to maintain hygiene.

4. Other Measures

- Installation of fire extinguishers in Laboratories, administrative office, Central library and girls common room.
- Water purifier is installed in college campus for drinking purpose.
- Functional sexual harassment cell, women studies and service centre, anti ragging cell, internal complaint cell and suggestion and complaint box are some of the major initiatives taken by the institution for the safety of girls students and to maintain discipline in the college campus.

SAFETY MEASURES



JV94-W89, Forest Colony, Brahmapuri, Maharashtra 441206, India		
	Decimal	DMS
Latitude	20.620171	20°37'12" N
Longitude	79.855651	79°51'20" E
2021-12-15(Wed) 01:27(PM)		



JV94-W89, Forest Colony, Brahmapuri, Maharashtra 441206, India		
	Decimal	DMS
Latitude	20.619725	20°37'11" N
Longitude	79.85566	79°51'20" E
2021-12-15(Wed) 01:29(PM)		



JVC9-915, Forest Colony, Brahmapuri, Maharashtra 441206, India		
	Decimal	DMS
Latitude	20.620239	20°37'12" N
Longitude	79.856381	79°51'22" E
2021-12-15(Wed) 02:33(PM)		



JVC3-4K3, Forest Colony, Brahmapuri, Maharashtra 441206, India		
	Decimal	DMS
Latitude	20.619794	20°37'11" N
Longitude	79.856091	79°51'21" E
2021-12-15(Wed) 12:50(PM)		



JVC9-915, Forest Colony, Brahmapuri, Maharashtra 441206, India		
	Decimal	DMS
Latitude	20.620237	20°37'12" N
Longitude	79.85639	79°51'23" E
2021-12-15(Wed) 02:38(PM)		

For Safety point of view 99 CCTV cameras installed in the campus area including class room, administrative office, library, front corridor, main entrance etc.



N H college, Forest Colony, Brahmapuri, Maharashtra 441206, India		
	Decimal	DMS
Latitude	20.62136	20°37'16" N
Longitude	79.856108	79°51'21" E
2021-12-15(Wed) 01:48(PM)		



JV84-6PF, Churhe Bada, Brahmapuri, Maharashtra 441206, India		
	Decimal	DMS
Latitude	20.61551	20°36'55" N
Longitude	79.856808	79°51'24" E
2021-12-15(Wed) 01:54(PM)		

Guard room at college entrance

Protection wall all around the campus area



JV94-W89, Forest Colony, Brahmapuri, Maharashtra 441206, India			
	Decimal	DMS	
Latitude	20.619867	20°37'11" N	
Longitude	79.855722	79°51'20" E	
2021-12-15(Wed) 01:48(PM)			



JV94-W89, Forest Colony, Brahmapuri, Maharashtra 441206, India			
	Decimal	DMS	
Latitude	20.619818	20°37'11" N	
Longitude	79.855742	79°51'20" E	
2021-12-15(Wed) 01:48(PM)			

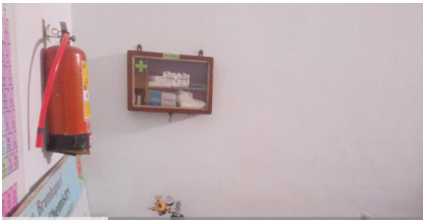


JV94-W85, Forest Colony, Brahmapuri, Maharashtra 441206, India			
	Decimal	DMS	
Latitude	20.620254	20°37'12" N	
Longitude	79.856456	79°51'23" E	
2021-12-15(Wed) 02:40(PM)			



JV94-W85, Forest Colony, Brahmapuri, Maharashtra 441206, India			
	Decimal	DMS	
Latitude	20.620197	20°37'12" N	
Longitude	79.856806	79°51'24" E	
2021-12-15(Wed) 02:41(PM)			

Sanitary Napkin vending machine and disposal machine installed in girls common room to maintain hygiene.



JV94-W88, Forest Colony, Brahmapuri, Maharashtra 441206, India			
	Decimal	DMS	
Latitude	20.619729	20°37'11" N	
Longitude	79.855515	79°51'19" E	
2021-12-15(Wed) 01:48(PM)			



Nil college campus, Forest Colony, Brahmapuri, Maharashtra 441206, India			
	Decimal	DMS	
Latitude	20.619683	20°37'10" N	
Longitude	79.856349	79°51'22" E	
2021-12-15(Wed) 01:43(PM)			

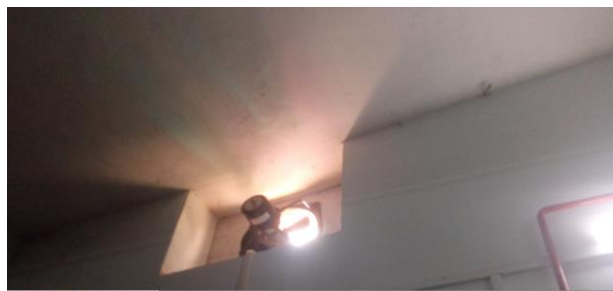


Nil college campus, Forest Colony, Brahmapuri, Maharashtra 441206, India			
	Decimal	DMS	
Latitude	20.619678	20°37'10" N	
Longitude	79.85635	79°51'22" E	
2021-12-15(Wed) 01:43(PM)			

Fire Extinguisher mounted in Laboratories, library and administrative office.



JV94-W89, Forest Colony, Brahmapuri, Maharashtra 441206, India			
	Decimal	DMS	
Latitude	20.619687	20°37'10" N	
Longitude	79.855697	79°51'20" E	
2021-12-15(Wed) 01:43(PM)			



JV94-W89, Forest Colony, Brahmapuri, Maharashtra 441206, India			
	Decimal	DMS	
Latitude	20.619687	20°37'10" N	
Longitude	79.855697	79°51'20" E	
2021-12-15(Wed) 01:43(PM)			

Fume hood and exhaust fan in chemistry laboratory for discharging harmful fumes present in the air of a laboratory.



JV94-W89, Forest Colony, Brahmapuri, Maharashtra 441206, India		
	Decimal	DMS
Latitude	20.619846	20°37'11" N
Longitude	79.855796	79°51'20" E
2021-12-15(Wed) 01:21(PM)		

Complaint Box



NH college campus, Forest Colony, Brahmapuri, Maharashtra 441206, India		
	Decimal	DMS
Latitude	20.61965	20°37'10" N
Longitude	79.856327	79°51'22" E
2021-12-15(Wed) 01:36(PM)		

Suggestion Box



JVC3-4X3, Forest Colony, Brahmapuri, Maharashtra 441206, India		
	Decimal	DMS
Latitude	20.619898	20°37'11" N
Longitude	79.85609	79°51'21" E
2021-12-15(Wed) 12:52(PM)		



JV94-W89, Forest Colony, Brahmapuri, Maharashtra 441206, India		
	Decimal	DMS
Latitude	20.619729	20°37'11" N
Longitude	79.855515	79°51'19" E
2021-12-15(Wed) 01:18(PM)		

First Aid Box Available in the chemistry Laboratory



N H college, Forest Colony, Brahmapuri, Maharashtra 441206, India		
	Decimal	DMS
Latitude	20.620313	20°37'13" N
Longitude	79.856231	79°51'22" E
2021-12-15(Wed) 02:34(PM)		



N H college, Forest Colony, Brahmapuri, Maharashtra 441206, India		
	Decimal	DMS
Latitude	20.620207	20°37'12" N
Longitude	79.855726	79°51'20" E
2021-12-15(Wed) 01:05(PM)		

Water purifier installed in college campus for drinking purpose.