

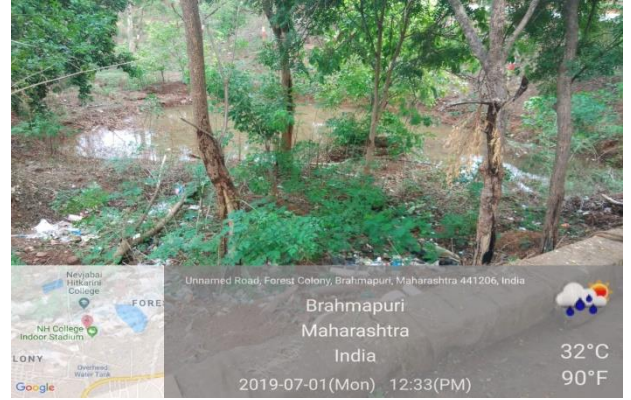
Water Reservoir and Rain Water Harvesting

The college has tube well and two underground water tanks to meet the general needs of the institution. The rain water from the top of the roofs and ground is collected through proper channel in college premises. The water is collected in artificial pond in college premises and lake behind the PG building and it is used for gardening and trees.

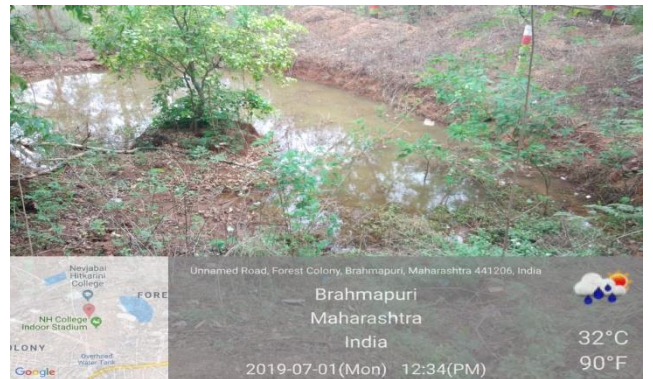
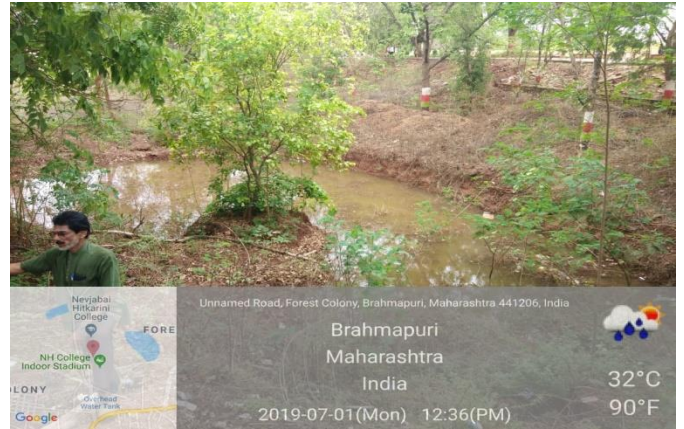


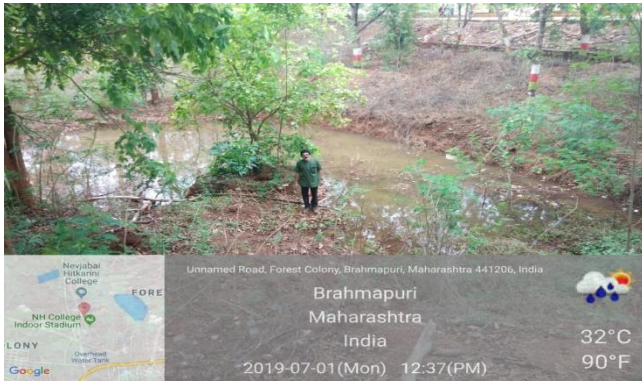
Channel for Rain Water at College Entry Gate





Channel for Rain Water in College Premises





Water Reservoir



Water Lake behind PG Building



Slope for Rain Water toward Lake



Slope for Rain Water toward Lake